

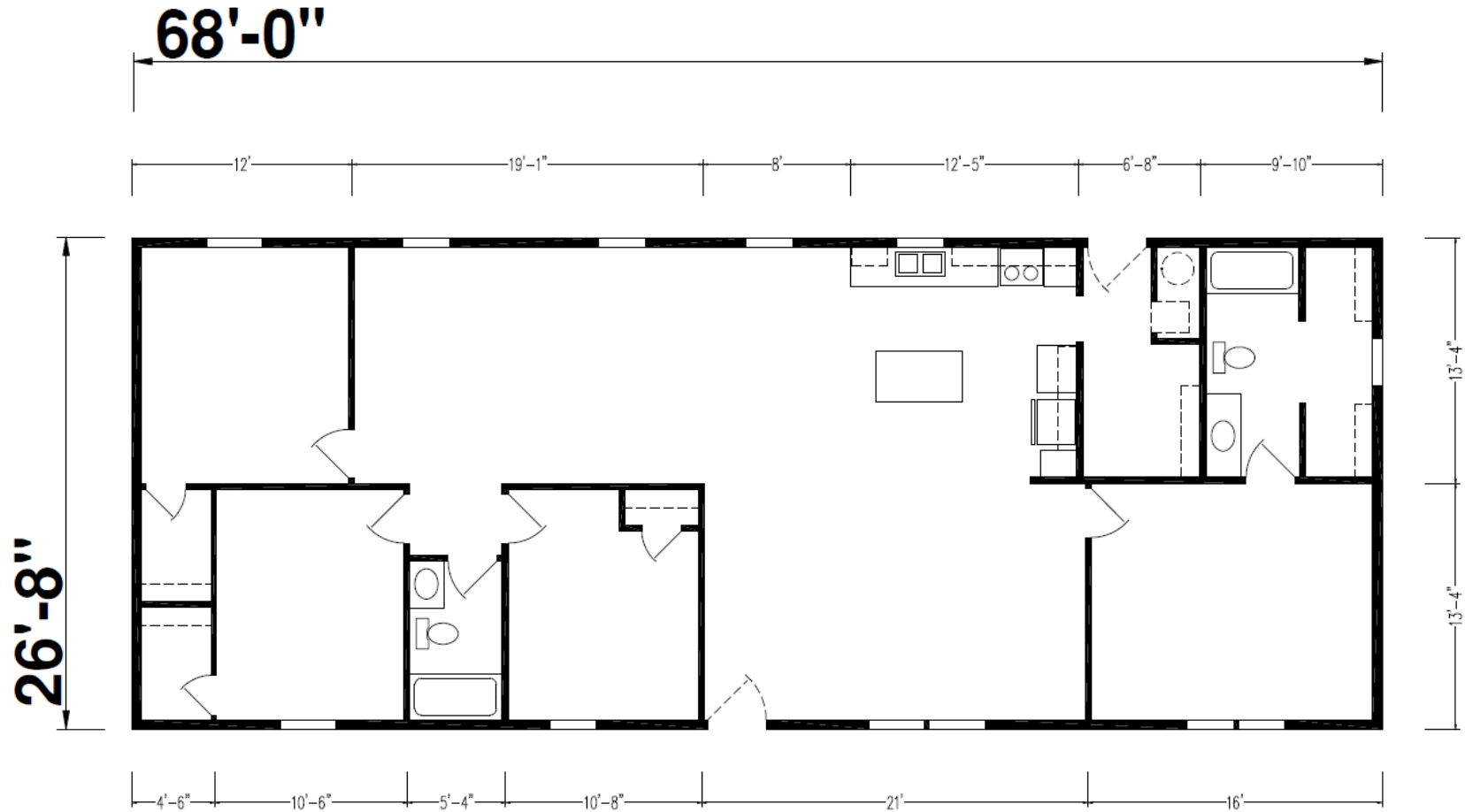
Yakima

Redman Series

1,813 SQ. FT. (Approximate) 4 Bedroom, 2 Bath

CHAMPION[®]
HOMES CENTER

Last Updated: 2-12-24



CHAMPION HOMES CENTER
550 Booth Bend Rd.
McMinnville, OR 97128

NorthWestFactoryDirectHomes.com | 1-800-645-4943

IMPORTANT: Champion Homes reserves the right to modify, cancel or substitute products or features of this event at any time without prior notice or obligation. Pictures and other promotional materials are representative and may depict or contain floor plans, square footages, elevations, options, upgrades, extra design features, decorations, floor coverings, specialty light fixtures, custom paint and wall coverings, window treatments, landscaping, sound and alarm systems, furnishings, appliances, and other designer/decorator features and amenities that are not included as part of the home and/or may not be available at all locations. Home, pricing and community information is subject to change, and homes to prior sale, at any time without notice or obligation. ©2020 Alta Cima Corp. All rights reserved.

MANUFACTURED BY:

SKYLINE

I authorize Champion Homes Center to build my house, per this plan.

X _____

Customer Signature/Date